



PINACO

F L O O R T E X

Committed to supplying
Quality and Modern
Flooring



Pinaco have a wide range of products with a variety of styles, textures and colours



Pinaco is a leading supplier of laminate flooring providing professionally designed products that is perfect for any building project.

P I N A C O



The Pinaco team are experts in floating floors and ensure all our products are made to a high standard. Through continuous research and development, we have developed the perfect combination of styling, texture and colours. Using the latest technologically advanced click system, our products create a professional appearance to any building or re-development project.

All Pinaco products are developed using the latest advanced European click system technology. This ensures an ease of installation and creates the floating floor effect without unsightly glue or nails. Come see our wide range of designs that have the perfect combination of styling, texture and colour.





Hard wearing and resilient, laminated floors are the affordable alternatives for any development project. With a wide range of styles, textures and colours there is a design for every personal taste.

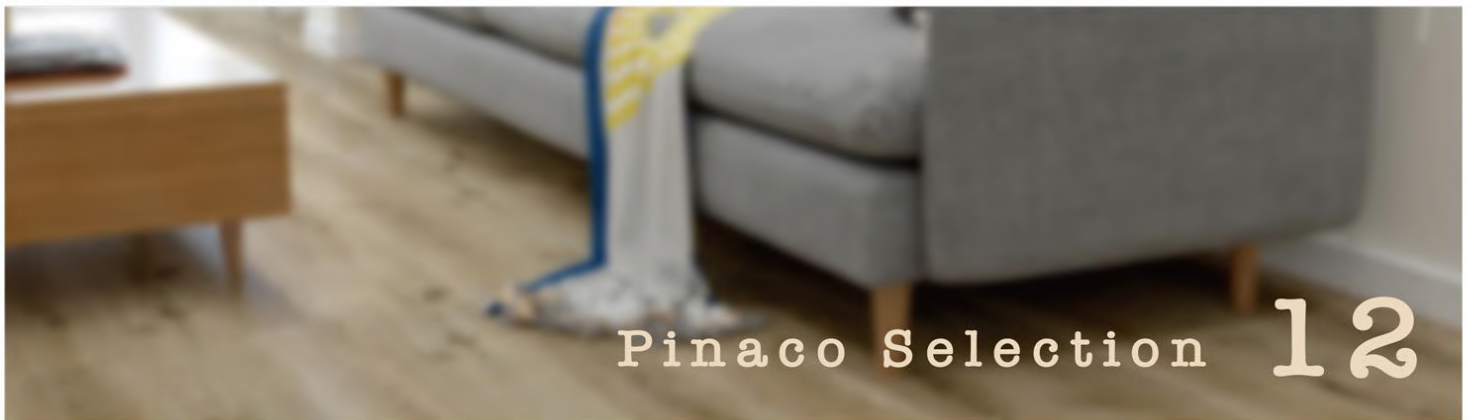
SO WHY PINACO

P I N A C O

Pinaco always provides stylish and durable flooring and our laminate collection is no exception. With a surface that is wear, scratch and indentation resistant, PINACO laminate is an outstanding range. The surface is infused with microscopic granules of carborundum to create a hard wearing melamine flooring.



Pinaco Laminate is a floating floor and brings a range of advantages over other flooring options. The floors can be installed over heated or moist subfloors and provide an enormous range of colours and styles. Using the world renowned Uniclic installation systems , this provides a glue-less, easy installation. Each installed floor is then treated with Scratch Guard and creates a surface that is 10 times more durable than our competitors.





FLOORTEX

PINACO

8mm

LAMINATE



Laminate brings you the unique combination of the tough colour fast finish of laminate flooring with the atmosphere of real EUROPEAN OAK. The stunning range of décor and designs ensure that you receive quality flooring with every installation.

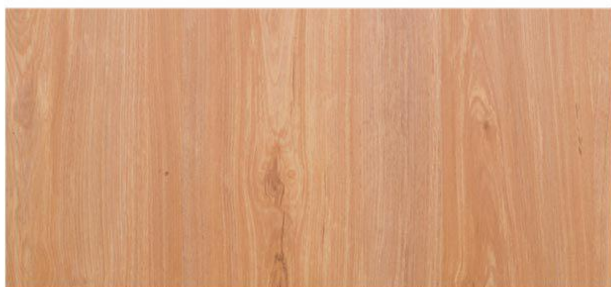
01

LAMINATE
8MM



P801: Lanno

SIZE: 1215x194x8mm
CLICK: Uni-click
FINISH: Real wood feel
SPECIE: European Oak
INSTALLATION: Floating
PACKS: 2.3571m2



P802: Kinawa

SIZE: 1215x194x8mm
CLICK: Uni-click
FINISH: Real wood feel
SPECIE: European Oak
INSTALLATION: Floating
PACKS: 2.3571m2



P803: Cavalie

SIZE: 1215x194x8mm
CLICK: Uni-click
FINISH: Real wood feel
SPECIE: European Oak
INSTALLATION: Floating
PACKS: 2.3571m2



P805: Annata

SIZE: 1215x194x8mm
CLICK: Uni-click
FINISH: Real wood feel
SPECIE: European Oak
INSTALLATION: Floating
PACKS: 2.3571m2

01

LAMINATE
8MM

01

P806: Lucasa

SIZE: 1215x194x8mm
CLICK: Uni-click
FINISH: Real wood feel
SPECIE: European Oak
INSTALLATION: Floating
PACKS: 2.3571m2



P809: Carbo

SIZE: 1215x194x8mm
CLICK: Uni-click
FINISH: Real wood feel
SPECIE: European Oak
INSTALLATION: Floating
PACKS: 2.3571m2



P810: Diva

SIZE: 1215x194x8mm
CLICK: Uni-click
FINISH: Real wood feel
SPECIE: European Oak
INSTALLATION: Floating
PACKS: 2.3571m2



P811: Caramel

SIZE: 1215x194x8mm
CLICK: Uni-click
FINISH: Real wood feel
SPECIE: European Oak
INSTALLATION: Floating
PACKS: 2.3571m2



Pinaco Selection



F L O O R T E X

PINACO SELECTION

12mm

LAMINATE

Using the latest European joining technology, Pinaco Selection uses 5G click system to create an easier and watertight installation, whilst still combining the best of European Oak with a wide range of designer colors, ensuring there is a design for every taste. With an elegant Matt Finish combined with modern colours ranging from light cool grey, through to warmer mocha colours, the collection hosts a variety of styles.

02

LAMINATE 12MM



P001: Saba

SIZE: 1215x196x12mm

CLICK: 5G-click

FINISH: EIR-Embossed In Register

SPECIES: European Oak

INSTALLATION: Floating

PACKS: 1.43m²



P002: Toscano

SIZE: 1215x196x12mm

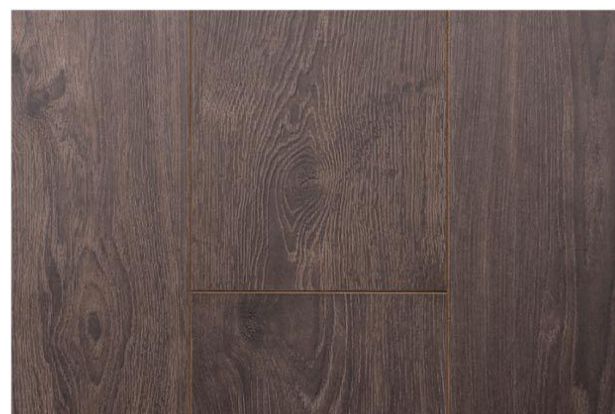
CLICK: 5G-click

FINISH: EIR-Embossed In Register

SPECIES: European Oak

INSTALLATION: Floating

PACKS: 1.43m²



P003: Nerabella

SIZE: 1215x196x12mm

CLICK: 5G-click

FINISH: EIR-Embossed In Register

SPECIES: European Oak

INSTALLATION: Floating

PACKS: 1.43m²

02

LAMINATE
12MM

02

P004: Moscato

SIZE: 1215x196x12mm
CLICK: 5G-click
FINISH: EIR-Embossed In Register
SPECIES: European Oak
INSTALLATION: Floating
PACKS: 1.43m²



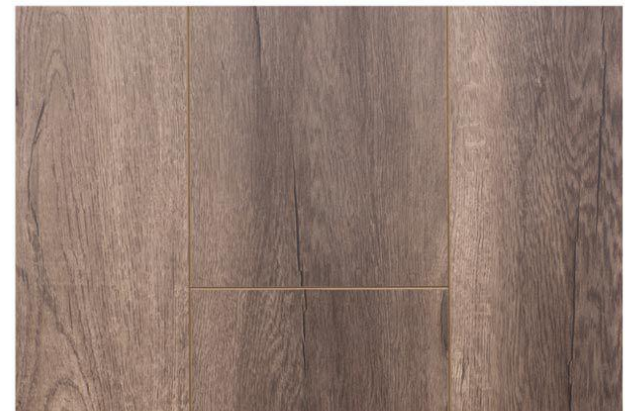
P007: Canela

SIZE: 1215x196x12mm
CLICK: 5G-click
FINISH: EIR-Embossed In Register
SPECIES: European Oak
INSTALLATION: Floating
PACKS: 1.43m²



P009: Mako

SIZE: 1215x196x12mm
CLICK: 5G-click
FINISH: EIR-Embossed In Register
SPECIES: European Oak
INSTALLATION: Floating
PACKS: 1.43m²



02

LAMINATE 12MM



P010: Arpa

SIZE: 1215x196x12mm

CLICK: 5G-click

FINISH: EIR-Embossed In Register

SPECIES: European Oak

INSTALLATION: Floating

PACKS: 1.43m²



P012: Lumie

SIZE: 1215x196x12mm

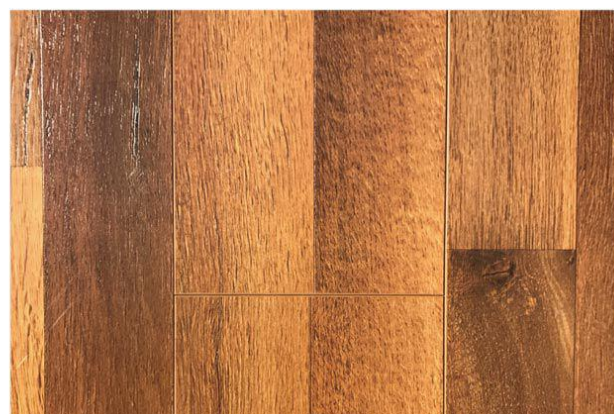
CLICK: 5G-click

FINISH: EIR-Embossed In Register

SPECIES: European Oak

INSTALLATION: Floating

PACKS: 1.43m²



P013: Castan

SIZE: 1215x196x12mm

CLICK: 5G-click

FINISH: EIR-Embossed In Register

SPECIES: European Oak

INSTALLATION: Floating

PACKS: 1.43m²

02

LAMINATE 12MM

02

P015: Saya

SIZE: 1215x196x12mm
CLICK: 5G-click
FINISH: EIR-Embossed In Register
SPECIES: European Oak
INSTALLATION: Floating
PACKS: 1.43m²



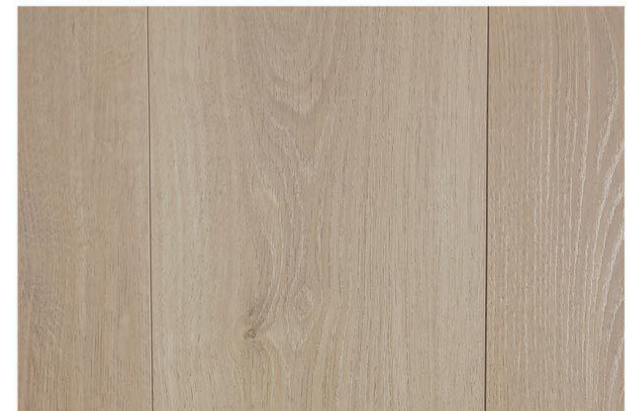
P016: Gris

SIZE: 1215x196x12mm
CLICK: 5G-click
FINISH: EIR-Embossed In Register
SPECIES: European Oak
INSTALLATION: Floating
PACKS: 1.43m²



P017: Behaney

SIZE: 1215x196x12mm
CLICK: 5G-click
FINISH: EIR-Embossed In Register
SPECIES: European Oak
INSTALLATION: Floating
PACKS: 1.43m²





**Australian Wood
Species Laminate Floor**



Be eco-friendly and yet still relish in the design of Mother Nature with Pinaco's Australian Wood range. Unique to the Pinaco range this new HD Series is patterned from real Australian Wood grain.

Choose from NSW Spotted Gum, Coastal Blackbutt, Sydney Blue Gum or Jarrah, you can now enjoy a bit of the "Great Australian Outback" by styling your home or office with this unique range that has been patterned from four of Australia's native Eucalyptus trees.

LAMINATE HD Series

03

LAMINATE HD Series



HD701: NSW Spotted Gum

Surface: Semi Gloss
Dimension: 1215x195x12mm
Edging: Micro Bevel
Click: Drop Lock
Packs: 1.9m2



HD702: Coastal Blackbutt

Surface: Semi Gloss
Dimension: 1215x195x12mm
Edging: Micro Bevel
Click: Drop Lock
Packs: 1.9m2



HD703: Sydney Blue Gum

Surface: Semi Gloss
Dimension: 1215x195x12mm
Edging: Micro Bevel
Click: Drop Lock
Packs: 1.9m2



HD704 : Jarrah

Surface: Semi Gloss
Dimension: 1215x195x12mm
Edging: Micro Bevel
Click: Drop Lock
Packs: 1.9m2

03



Who said style had to come with great price and time!

Stylish, affordable and low maintenance - Pinaco's Hybrid Flooring range is the key.

Pinaco's Hybrid Flooring range (also known as SPC flooring) is the new ERA in Vinyl flooring. Derived from natural lime stone this type space of eco-friendly flooring is easy to maintain, durable and 100% waterproof.

With these unique features, maintenance for any busy household or office couldn't get any easier.

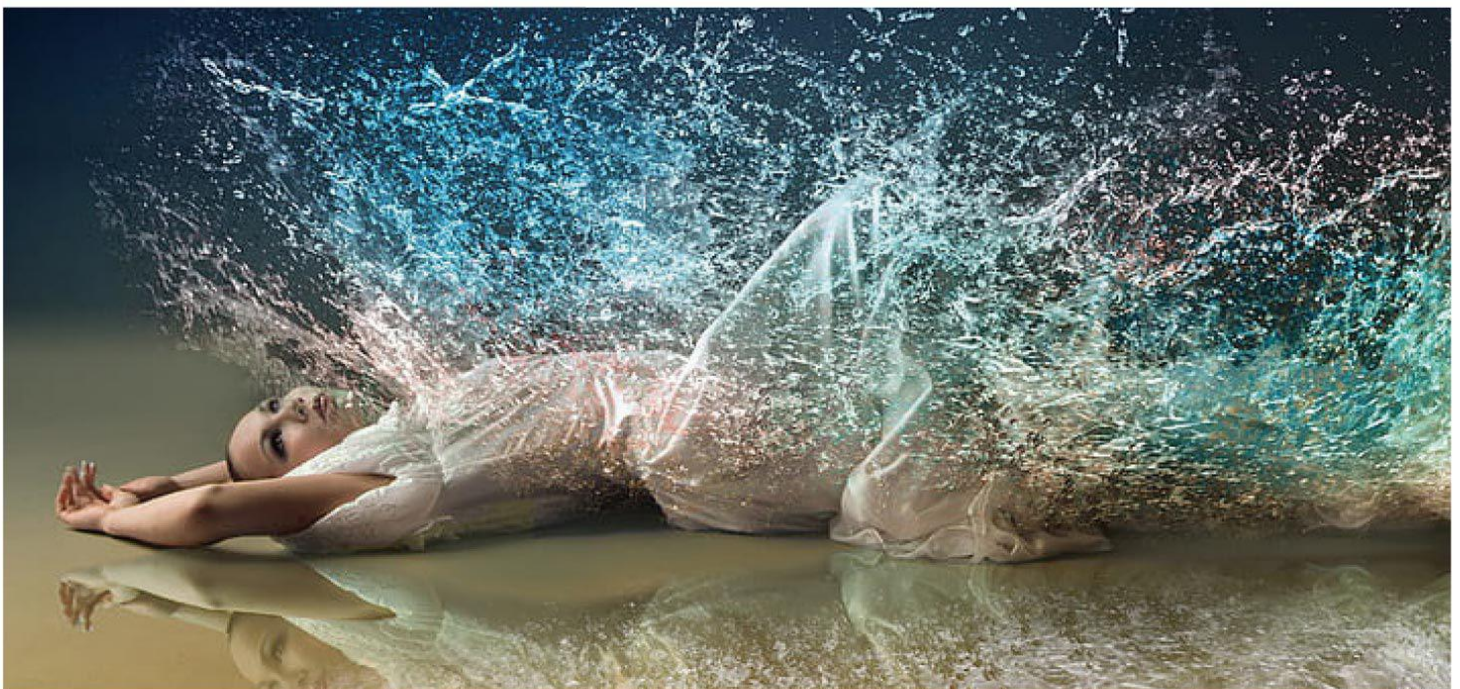
SPC Flooring Structure



HYBIRD FLOORING STRUCTURE

Pinaco Hybrid floor is also named SPC Flooring (Stone Plastic Composite) And Pinaco's SPC floor is designed to exceed. The main component is lime stone (calcium carbonate)+ PVC Powder + Stabilizer. Different from regular vinyl floor, there is no plasticiser inside, so it is more environmentally friendly.

SPC flooring mainly structured with the UV Coating , abrasion resistant paper ,decorative paper film and core board. Meanwhile EVA or IXPE option available for high end usage.



HYBRID FLOORING

04

V501: Lago

TYPE: RCB Hybrid Plank
SIZE: 1220x180x5/0.5+1.5EVA
PROFILE: Click Profile Floating
SURFACE: 0.5mm Robust Wear Layer
PACKS: 8 Planks, 1.7568m²/Ctn
WEIGHT: 18.5kgs/Ctn
STRUCTURE: Waterproof Whitecore.



V502: Seashell

TYPE: RCB Hybrid Plank
SIZE: 1220x180x5/0.5+1.5EVA
PROFILE: Click Profile Floating
SURFACE: 0.5mm Robust Wear Layer
PACKS: 8 Planks, 1.7568m²/Ctn
WEIGHT: 18.5kgs/Ctn
STRUCTURE: Waterproof Whitecore.



V503: Mikken

TYPE: RCB Hybrid Plank
SIZE: 1220x180x5/0.5+1.5EVA
PROFILE: Click Profile Floating
SURFACE: 0.5mm Robust Wear Layer
PACKS: 8 Planks, 1.7568m²/Ctn
WEIGHT: 18.5kgs/Ctn
STRUCTURE: Waterproof Whitecore.



V504: Chestnut

TYPE: RCB Hybrid Plank
SIZE: 1220x180x5/0.5+1.5EVA
PROFILE: Click Profile Floating
SURFACE: 0.5mm Robust Wear Layer
PACKS: 8 Planks, 1.7568m²/Ctn
WEIGHT: 18.5kgs/Ctn
STRUCTURE: Waterproof Whitecore.



04

04

HYBRID FLOORING



V505: Mosba

TYPE: RCB Hybrid Plank
SIZE: 1220x180x5/0.5+1.5EVA
PROFILE: Click Profile Floating
SURFACE: 0.5mm Robust Wear Layer
PACKS: 8 Planks, 1.7568m²/Ctn
WEIGHT: 18.5kgs/Ctn
STRUCTURE: Waterproof Whitecore.



V506: Lapis

TYPE: RCB Hybrid Plank
SIZE: 1220x180x5/0.5+1.5EVA
PROFILE: Click Profile Floating
SURFACE: 0.5mm Robust Wear Layer
PACKS: 8 Planks, 1.7568m²/Ctn
WEIGHT: 18.5kgs/Ctn
STRUCTURE: Waterproof Whitecore.



V507: Bora

TYPE: RCB Hybrid Plank
SIZE: 1220x180x5/0.5+1.5EVA
PROFILE: Click Profile Floating
SURFACE: 0.5mm Robust Wear Layer
PACKS: 8 Planks, 1.7568m²/Ctn
WEIGHT: 18.5kgs/Ctn
STRUCTURE: Waterproof Whitecore.



V508: Desert Oak

TYPE: RCB Hybrid Plank
SIZE: 1220x180x5/0.5+1.5EVA
PROFILE: Click Profile Floating
SURFACE: 0.5mm Robust Wear Layer
PACKS: 8 Planks, 1.7568m²/Ctn
WEIGHT: 18.5kgs/Ctn
STRUCTURE: Waterproof Whitecore.

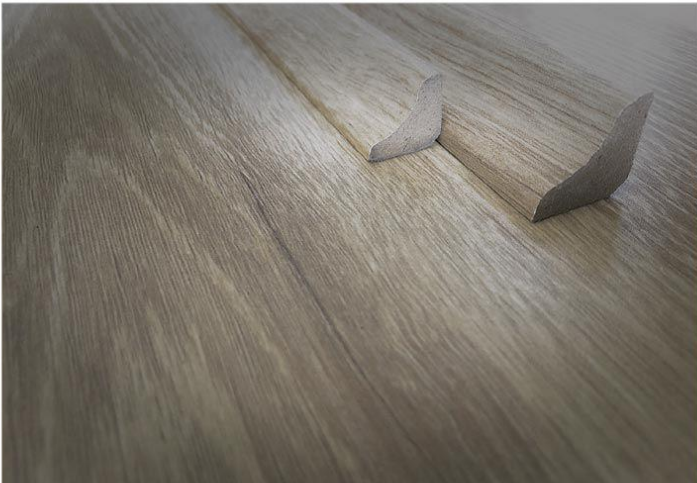


FLOORTEX SCOTIA

Floortex provides a scotia to match any flooring brand. A popular product Floortex's scotia produces over 80 colours to match all Pinaco laminate and timber floors.

After every new installation, flooring is left with unsightly gaps around the edges. Not only is this unsightly, it is a tripping hazard for walk-through traffic and allows the damp and cold to rise between these gaps. With a choice of over 80 colours of scotia to match all Pinaco laminate and timber floors these unsightly gaps becomes a non-issue.





After initial installation scotia is the perfect solution to finishing all Pinaco Floors. It provides the joining between floors and a variety of vertical surfaces, including kickboards, walls, skirting boards or kitchen cabinets. This prevents unsightly, obvious joins from detracting from the beauty of your new flooring. It also provides an extra protection for newly installed floors, preventing moisture and cold traveling up the cracks.

An essential finishing tactic for all interior floors, Floortex scotia matches to all their laminated and wooden floors with a wide range of over 80 colours and 2 profiles (19mm and 15mm)



Stair nose, whilst a beautifying feature to your newly installed staircase also absorbs much of the stair's traffic. There is no reason to use unsightly aluminium stair nose when Pinaco can provide you with a more elegant solution.

With colors and styles to match the entire Pinaco laminate range, styling your home or office space cannot be any easier.

PINACO STAIR NOSING



Floortex's Golden Foil Acoustic Underlay is a step above traditional under flooring. Using a golden foil on the underside of this underlay – sound is reduced significantly. The golden foil also provides a significant increase in the reduction of moisture retention. This additional feature eliminates other required layers, to provide an easier and faster installation.

FLOORTEX UNDERLAY

BENEFITS

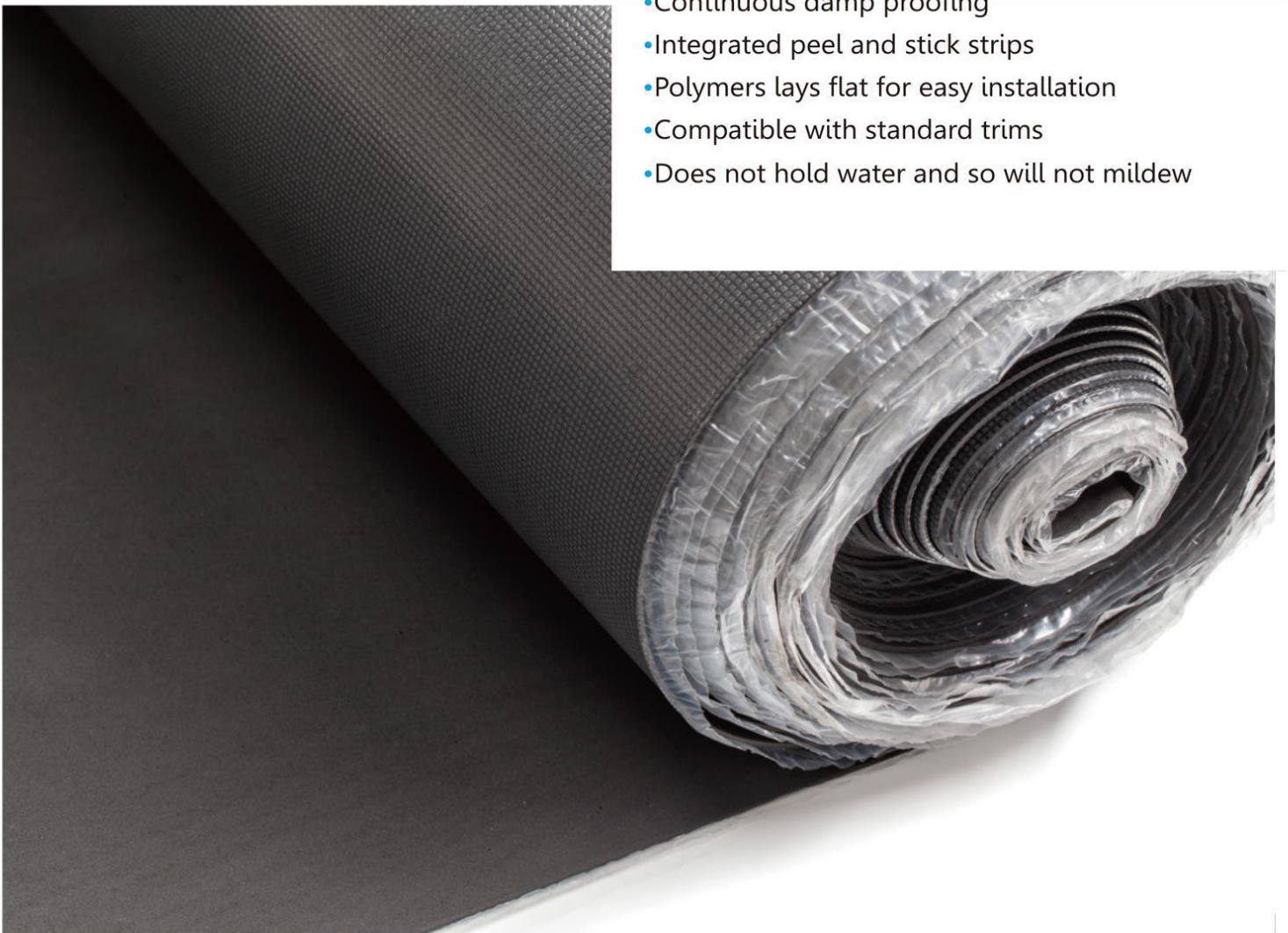
- At 3mm thick it delivers extra under flooring comfort
- Continuous damp proofing
- Integrated peel and stick strips
- Using advanced under sheeting, reduces sound above other products
- Compatible with standard trims
- Does not hold water and so will not mildew

FLOORTEX UNDERLAY

Floortex Premium Acoustic underlay is a superior underlay to the traditional under flooring for floating floor applications. Using the latest high density polyolefin copolymer resin, Floortex Premium Acoustic Underlay reduces noise by 30%. The ambient noise of foot traffic in standard underlays is significantly reduced using Floortex Premium Acoustic's latest technology. The integrated damp proof layer eliminates other required layers, which results in a quick and easy installation.

BENEFITS

- A 30% reduction of reflected noise of foot traffic compared to normal underlays
- Easy to handle
- Continuous damp proofing
- Integrated peel and stick strips
- Polymers lays flat for easy installation
- Compatible with standard trims
- Does not hold water and so will not mildew





FLOORTEX UNDERLAY

BENEFITS

- Easy to handle
- Continuous damp proofing
- Integrated peel and stick strips
- Polymers lays flat for easy installation
- Compatible with standard trims
- Does not hold water and so will not mildew

Floortex Foam Underlay Standard incorporates a continuous damp proof overlay. This eliminates the required additional damp proof layers resulting in quicker and easier installations.



Floortex's core business value is to deliver premium quality products to our clients. Comprising of a team of dedicated professionals from manufacturing know how to extensive market knowledge we specialise in laminate flooring.

With our advancement in manufacturing techniques Floortex's Pinaco range has been fine-tuned to ensure that our products are more reliable and competitive compared to our industry peers.

PINACO

LAMINATE

HYBRID



A new ERA in luxury stylish Enjoyment –
Pinaco by Floortex